



ECN Enterprise Fibre

ENTERPRISE FIBRE SOLUTION OVERVIEW

ECN Enterprise Fibre is a Ethernet symmetrical service providing bandwidth options of 10-1000 Mbps. It provides clients with the highest security, transparency and reliability required to move business-critical data. High-speed availability offering to SME and Corporate providing a stable and secure service in which to deliver internet services and high-quality voice.

Data and voice are transmitted via a dedicated Fibre link from your office to the nearest ECN data centre. Ethernet services are designed to address the increasing demand for high-speed data services and offers high-speed, reliability of communication and enhanced secure connectivity over ECN core network.

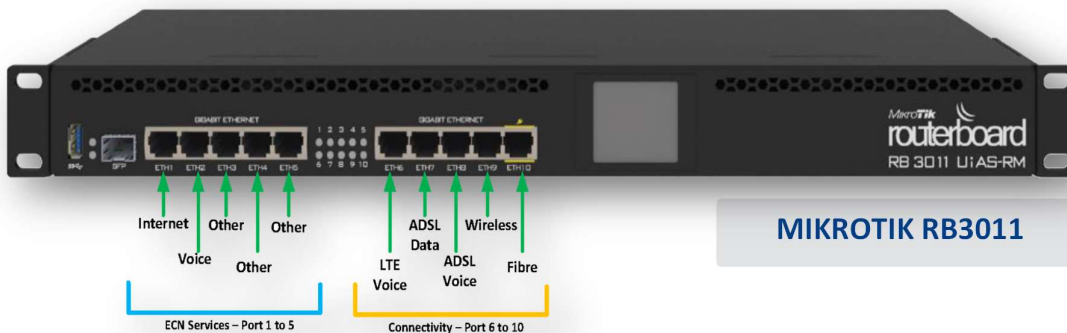
ECN PARTNERS



PRODUCT FEATURES

- } Speed range: 10Mbps, 20Mbps, 50Mbps, 100Mbps, 200Mbps, 500 Mbps & 1000Mbps
- } The service is uncapped and unshaped
- } SLA managed service. FUP and AUP policies apply
- } 1:1 Contention ration (access link)
- } This service is symmetrical, ie a 10Mbps service will have the same speed on uploads and downloads. Note: This excludes Openserve Fibre.
- } 1 Static IP
- } Voice VLAN Available - 30/60 Channel Voice Only services
- } Allows for 8 Concurrent Calls
- } Easy add on value added services

Recommended Router

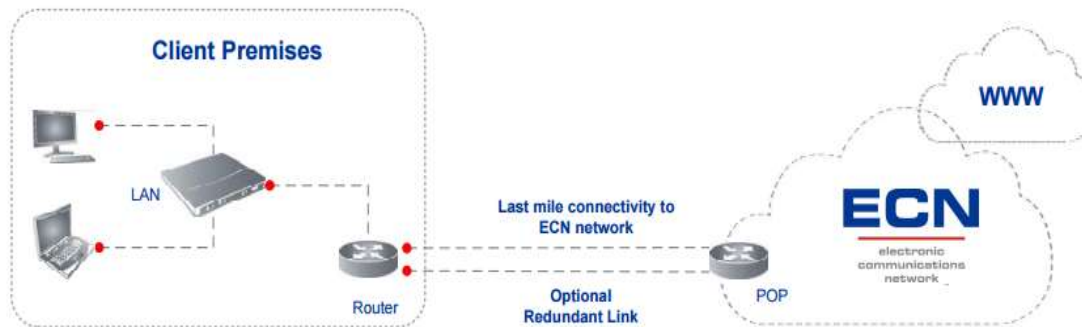


MIKROTIK RB3011

PRODUCT BENEFITS

- } Flexible bandwidth options ranging from 10 Mbps to 10 Gbps.
- } Proactive-network engagement (NNO) and reactive-service management.
- } Coverage is available nationally.
- } Reliable and resilient high-speed backbone on our own infrastructure.
- } Cost effective monthly pricing for the customer based on bandwidth and access.
- } Seamless bandwidth upgrades
- } Simple and highly secure, dedicated connection providing a high degree of transparency.

TYPICAL DEPLOYMENT



PRODUCT RULES

- } Special builds will be considered on a deal by deal basis subject to Provider term conditions and build costs.
- } No link aggregation. One Fibre service, one customer, distribution of one link amongst multiple customers is not allowed.
- } Upgrades are allowed within the contract term
- } Downgrades will not be allowed below the original service application.
- } The service may be requested anywhere where indicated as feasible by Provider.

PRODUCT RULES

- } Lead times are estimates and influenced by many factors which are outside the control of the Supplier. These may include – but are not limited to – obtaining approvals from municipalities, roads agencies, utilities providers, other network operators, private landowners, and landlords. Inclement weather conditions may affect construction work.
- } ECN shall do everything reasonably and practically possible to meet installation times but shall not be held liable in any way whatsoever for any delays in the installation of a Link.
- } Upgrade timelines are subject to no additional equipment or capacity being required.

Contact us by either calling or sending a mail to our sales department for more information.

Sales: 010 590 0000

Email: sales@ecn.co.za

Website: www.ecn.co.za