

ECN Business/Enterprise Wireless



BUSINESS FIBRE SOLUTION OVERVIEW

ECN's Business Wireless Internet Access is a data and / or voice solution which provides businesses with high performance and reliable Internet connectivity over microwave technology. Data and voice are transmitted via a dedicated wireless link from your office to the nearest ECN data centre. Wireless connectivity is subject to coverage and availability. The service supports interim and / or redundant options.

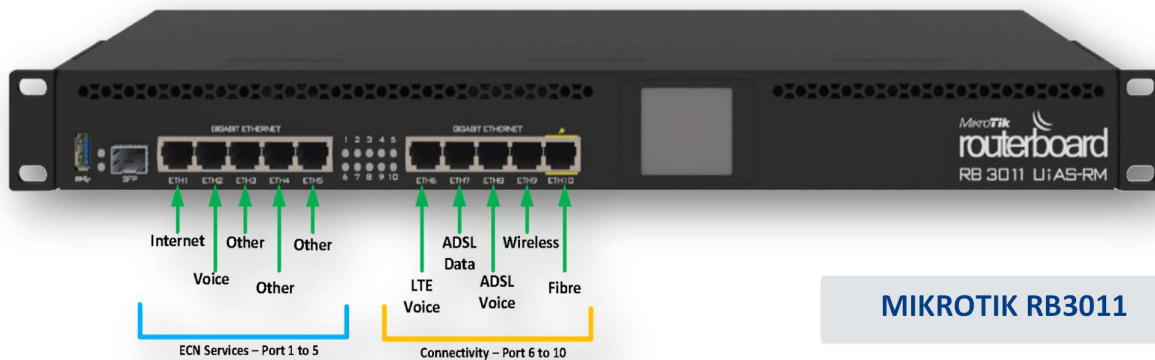
ECN PARTNERS



PRODUCT FEATURES

- } Speed range: 5Mbps, 10Mbps, 20Mbps, 50Mbps, 100Mbps, 200Mbps, 300 Mbps & 400Mbps
- } The service is uncapped and unshaped
- } FUP and AUP policies apply
- } Business grade, and 1:1 contention
- } This service is symmetrical, ie a 10Mbps service will have the same speed on uploads and downloads. Note: This excludes Openserve Fibre.
- } Dynamic IP address, and Static IP address vary with packages.
- } Voice VLAN Available - 30/60 Channel Voice Only services
- } Seamless bandwidth upgrades.
- } Easy add on value added services

Recommended Router

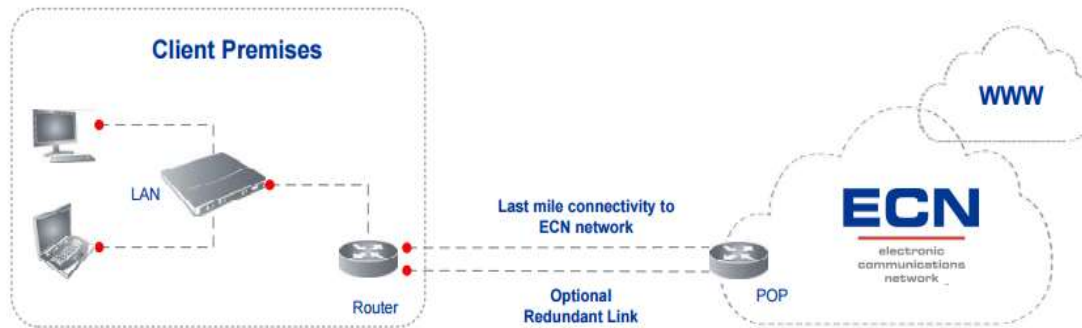


MIKROTIK RB3011

PRODUCT BENEFITS

- } Flexible bandwidth options ranging from 5 Mbps to 400 Mbps.
- } Proactive-network engagement (NNOC) and reactive-service management.
- } Broad coverage is available.
- } Rapid deployment times
- } Supports voice channels
- } Reliable and resilient high-speed backbone on our own infrastructure.
- } Cost effective monthly pricing for the customer based on bandwidth and access.
- } Seamless bandwidth upgrades
- } Certification - MEF Compliant – Single Metrics
- } Dedicated 28 GHz Spectrum Licensed Wireless Service
- } Coverage - 350+ South African towns and cities

TYPICAL DEPLOYMENT



PRODUCT RULES

- } Special builds will be considered in areas where towers are further than 5km radius.
- } No link aggregation. One Wireless service, one customer, distribution of one link amongst multiple customers is not allowed.
- } Upgrades are allowed within the contract term
- } Downgrades will not be allowed below the original service application.
- } The service may be requested anywhere where indicated as feasible by Provider.

PRODUCT RULES

- } Lead times are estimates and influenced by many factors which are outside the control of the Supplier. These may include – but are not limited to – other network operators, private landowners, and landlords. Inclement weather conditions may affect construction work.
- } ECN shall do everything reasonably and practically possible to meet installation times but shall not be held liable in any way whatsoever for any delays in the installation of a Link.
- } Upgrade timelines are subject to no additional equipment and or tower capacity being required.

Contact us by either calling or sending a mail to our sales department for more information.

Sales: 010 590 0000

Email: sales@ecn.co.za

Website: www.ecn.co.za